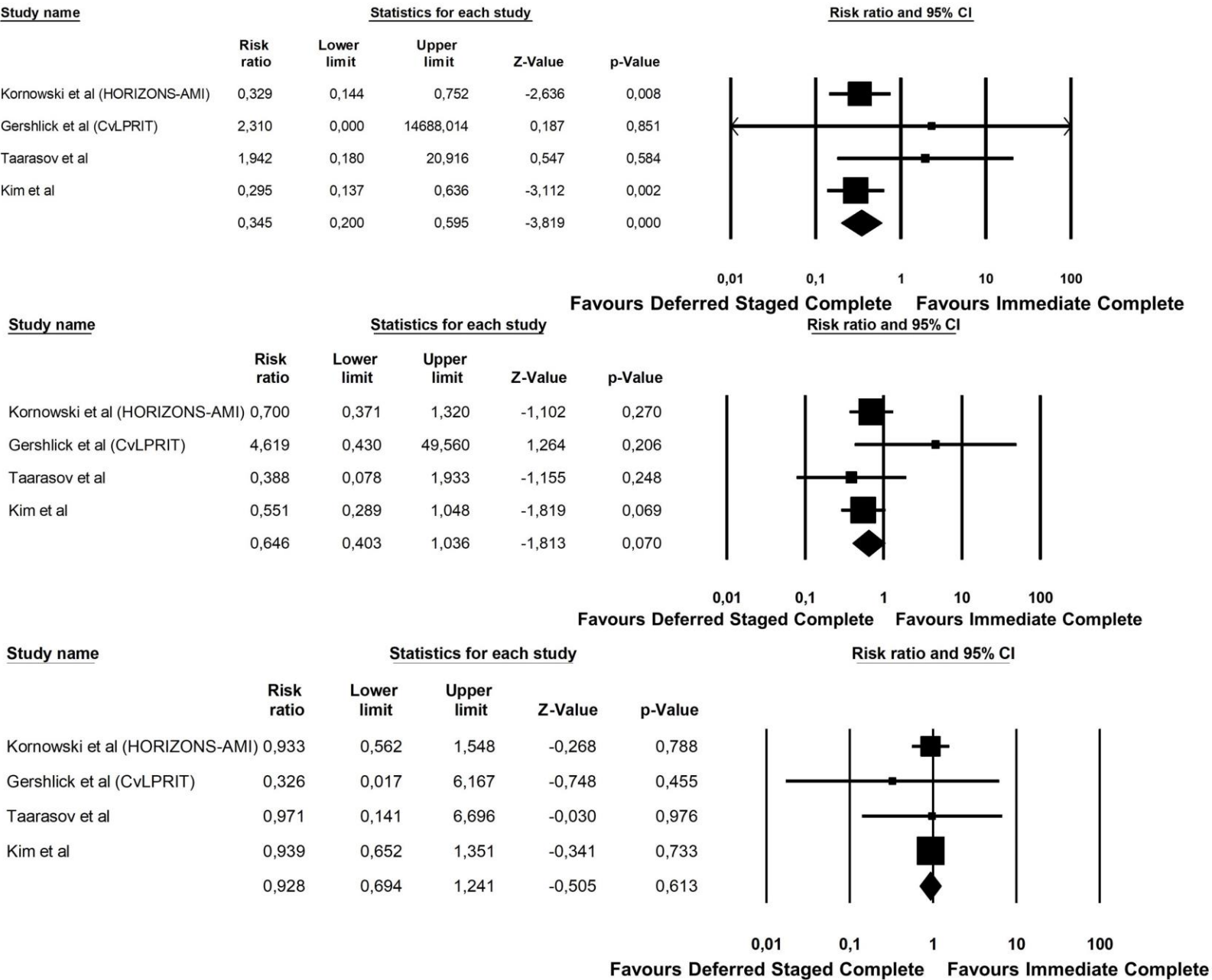
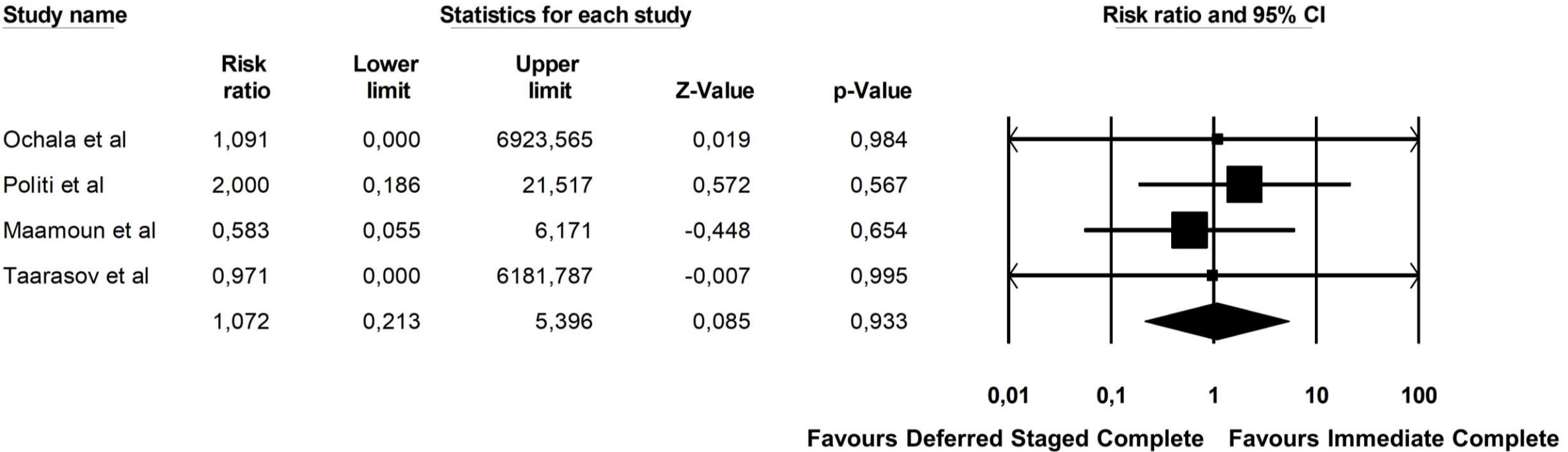


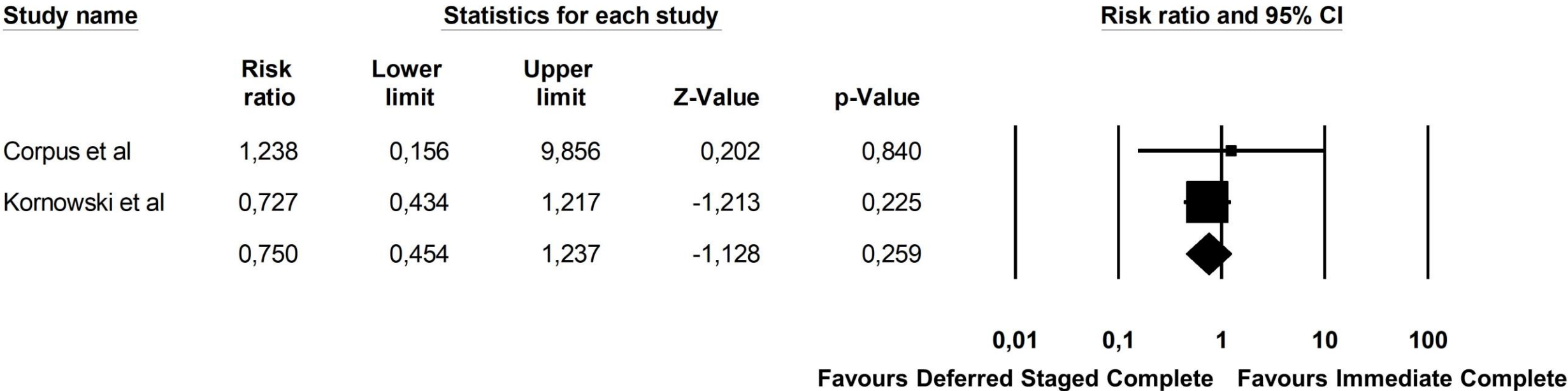
Supplementary Figure 1: forest plot of CV death (A), MI (B) and repeat revascularization (C) excluding studies with low adoption of DES.



Supplementary Figure 2: Forest plot for acute kidney injury (AKI).



Supplementary Figure 3: Forest plot for trial defined major bleeding.



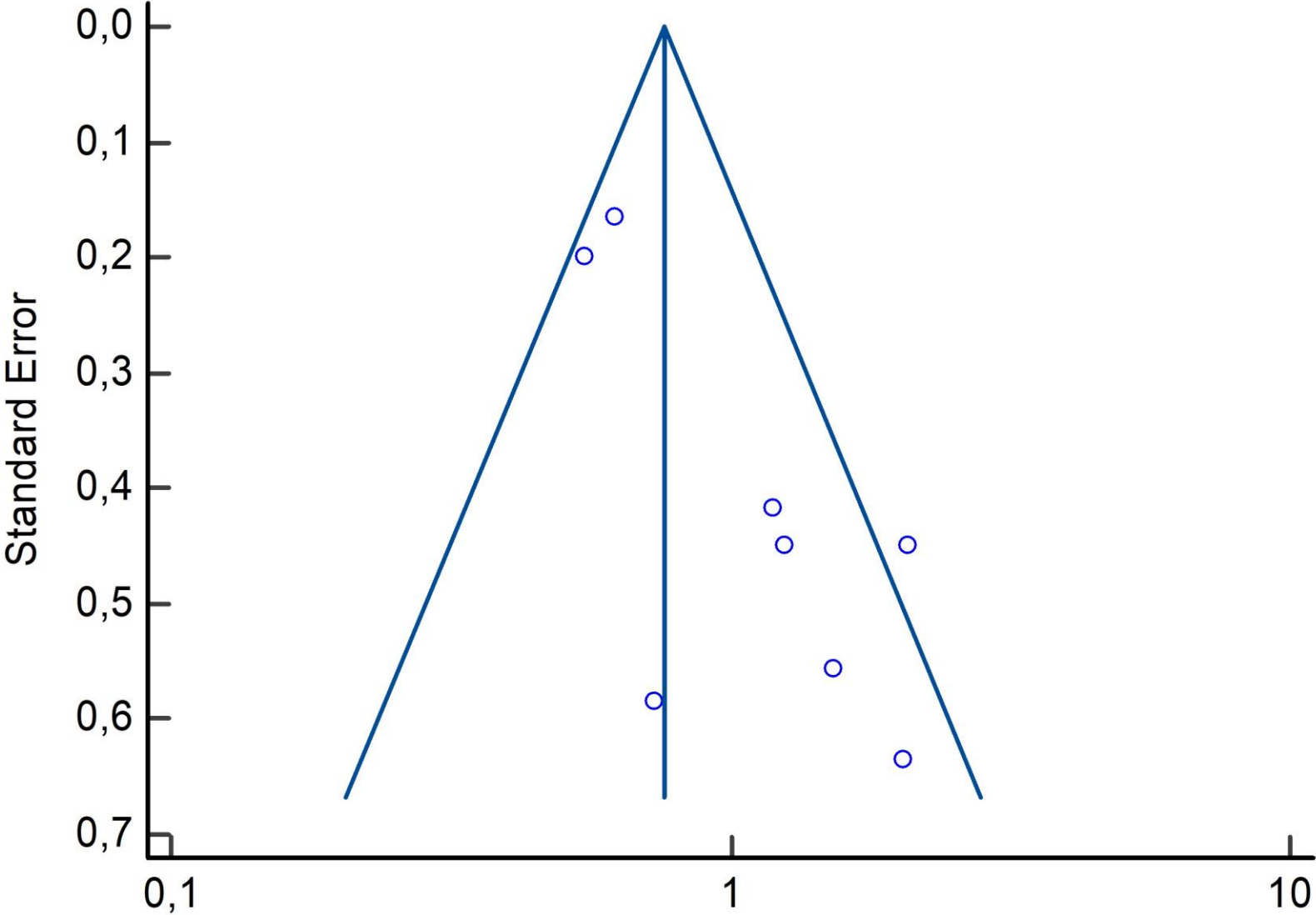
Supplementary Figure 4: traffic light plot for evaluation of bias.

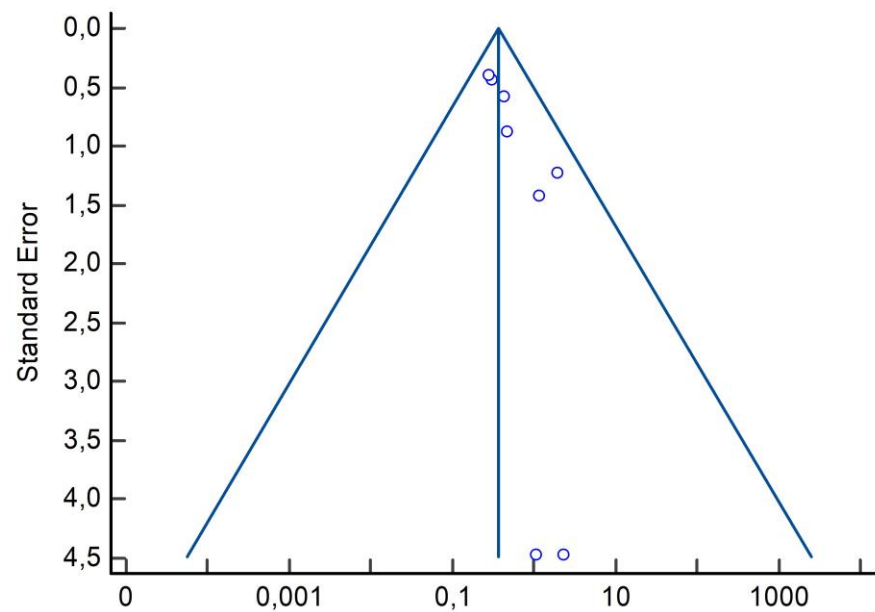
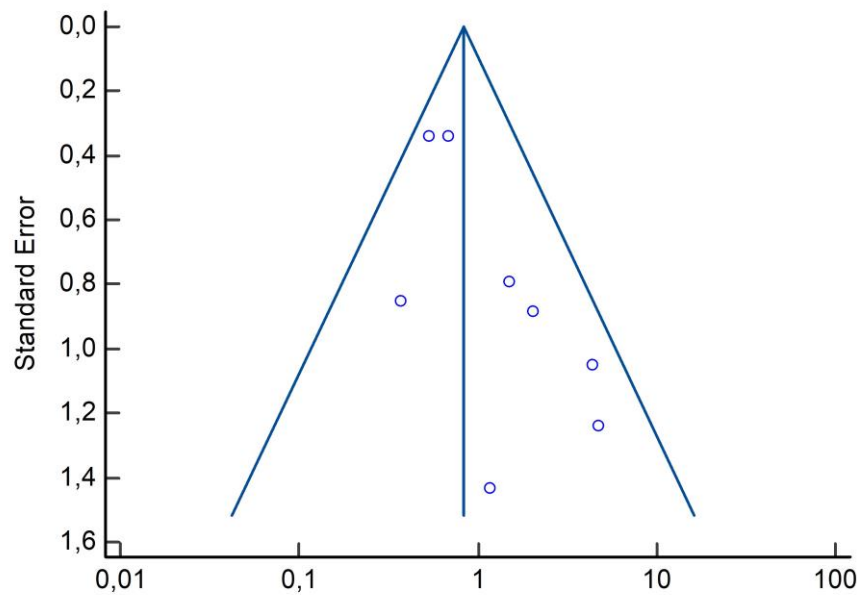
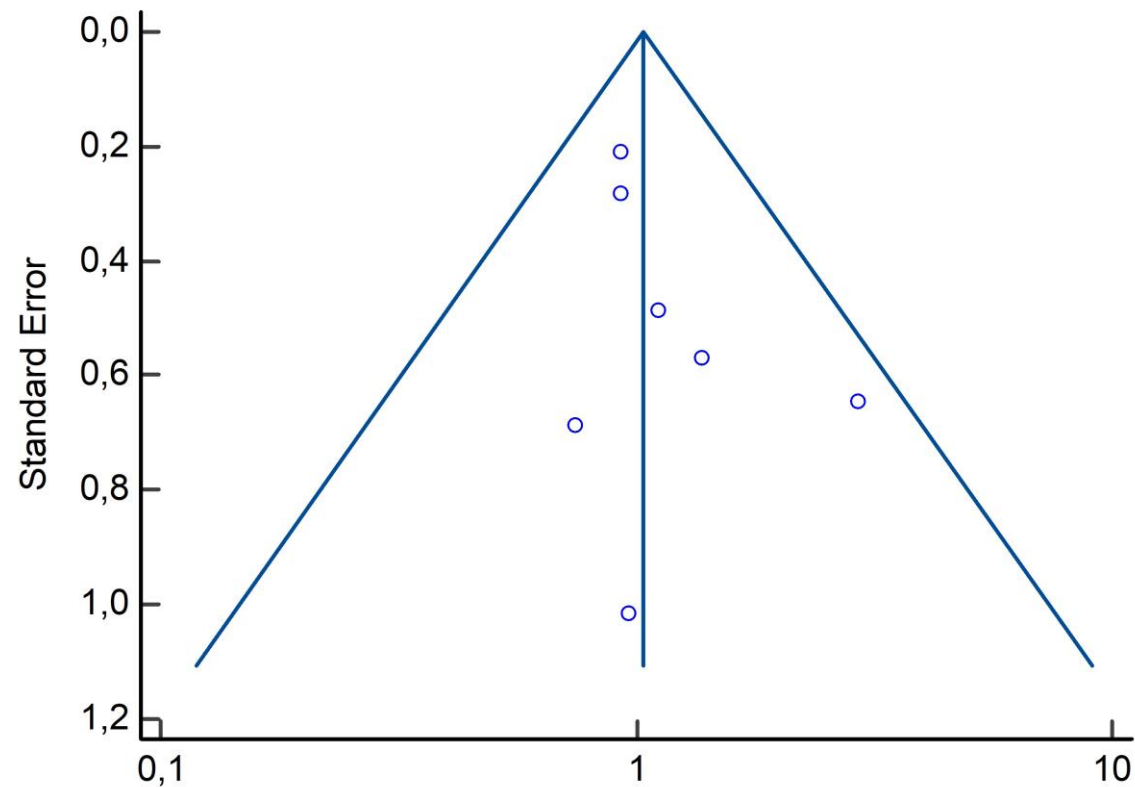
		Risk of bias domains					
		D1	D2	D3	D4	D5	Overall
Study	Ochala et al						
	Corpus et al						
	Politi et al						
	Maamoun et al						
	Kornowski et al						
	Gershlick et al						
	Tarasov et al						
	Kim et al						

Domains:
D1: Bias arising from the randomization process.
D2: Bias due to deviations from intended intervention.
D3: Bias due to missing outcome data.
D4: Bias in measurement of the outcome.
D5: Bias in selection of the reported result.

Judgement
X High
- Some concerns
+ Low

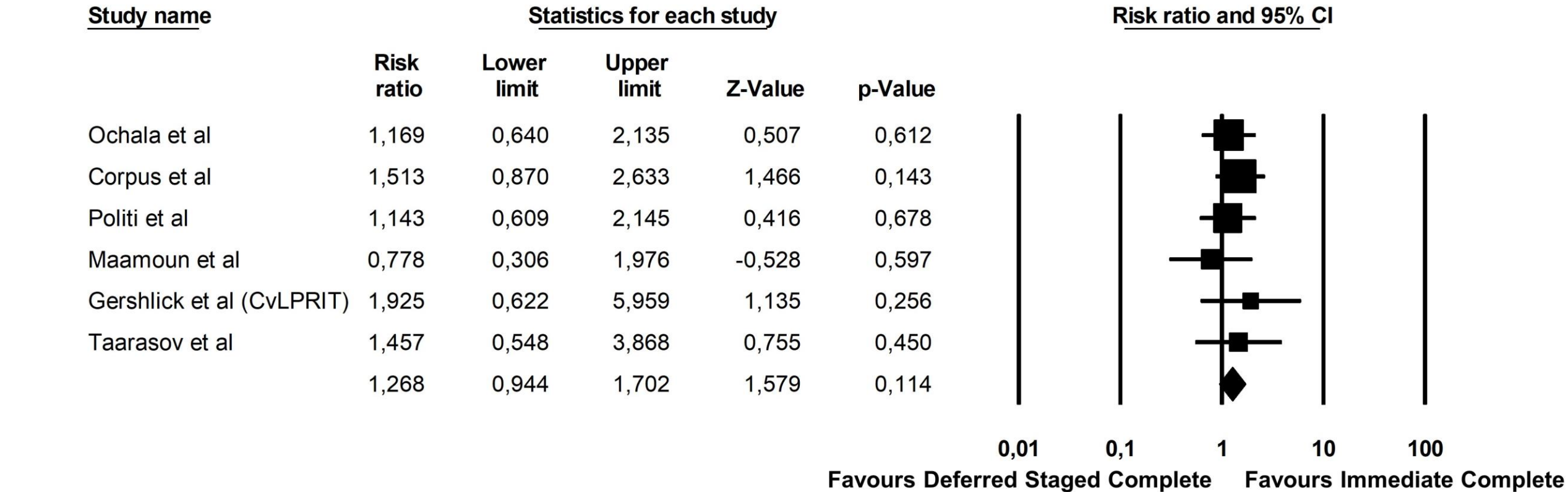
Supplementary Figure 5: Funnel Plots for the primary composite outcome of all cause death, MI and repeat revascularization.



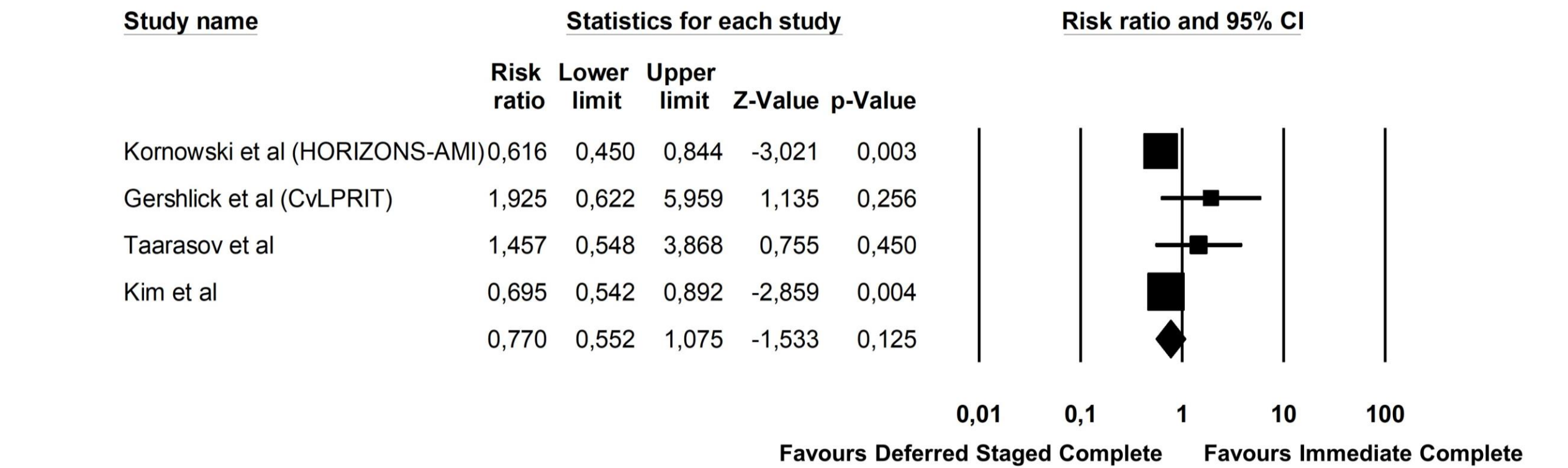
A**B****C**

Supplementary Figure 6: Funnel Plots for: A) CV death; B) Myocardial infarction; C) Repeat revascularization.

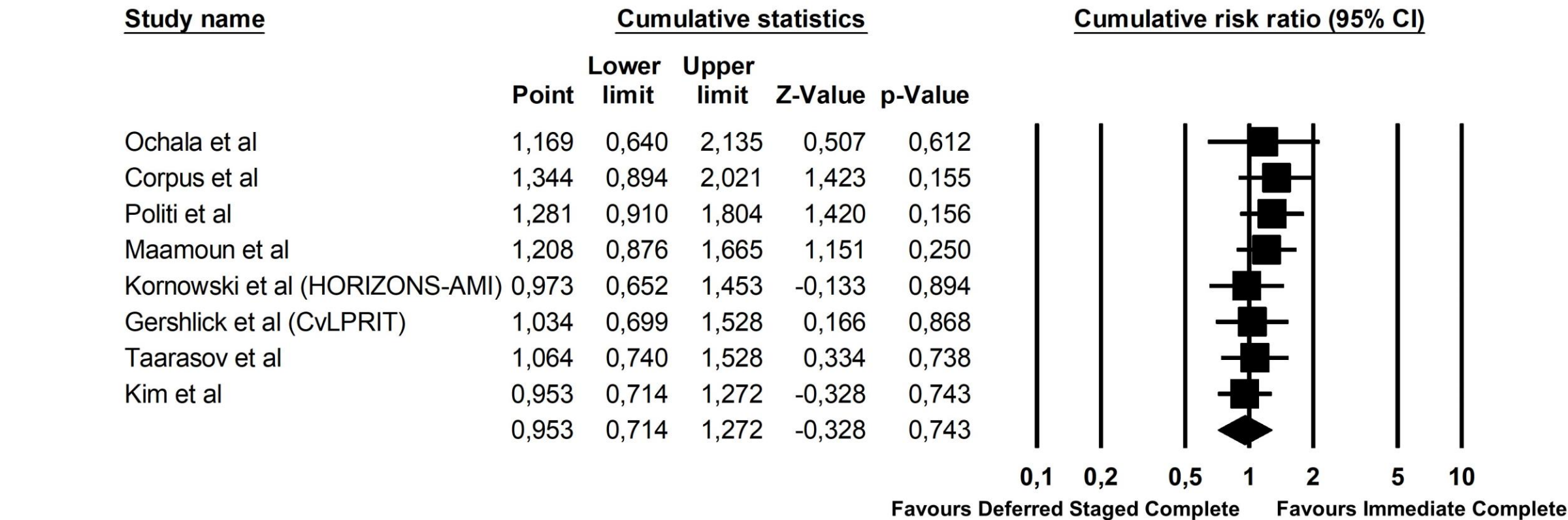
Supplementary Figure 7: Forest plot of the composite endpoint excluding the studies from Kim et al and Kornowski et al.



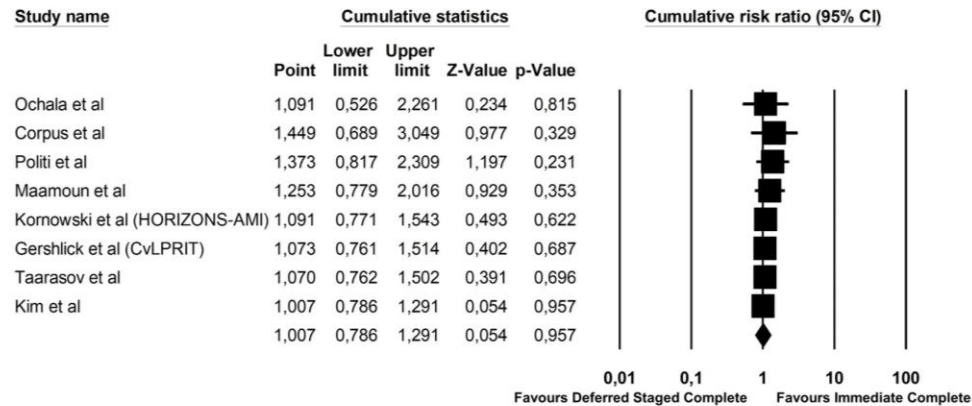
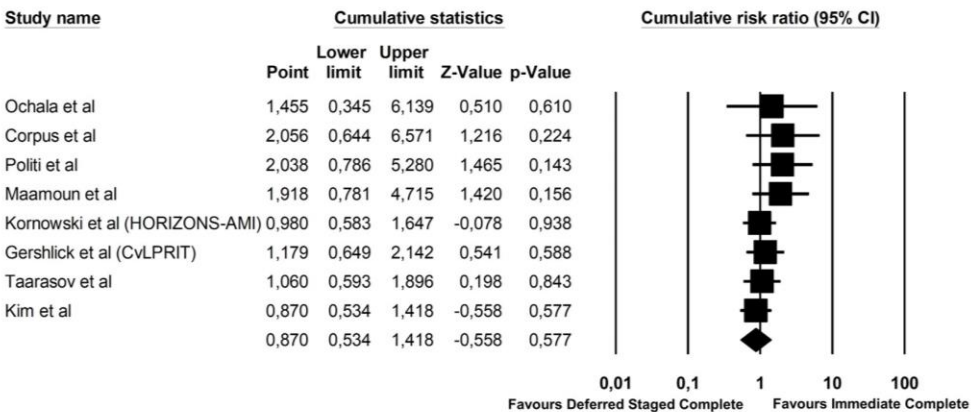
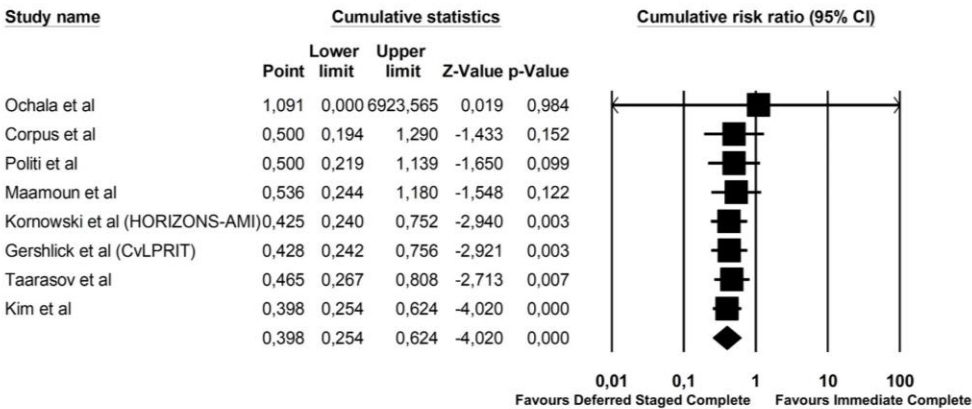
Supplementary Figure 8: Forest plot of the composite endpoint excluding studies with low adoption of DES.



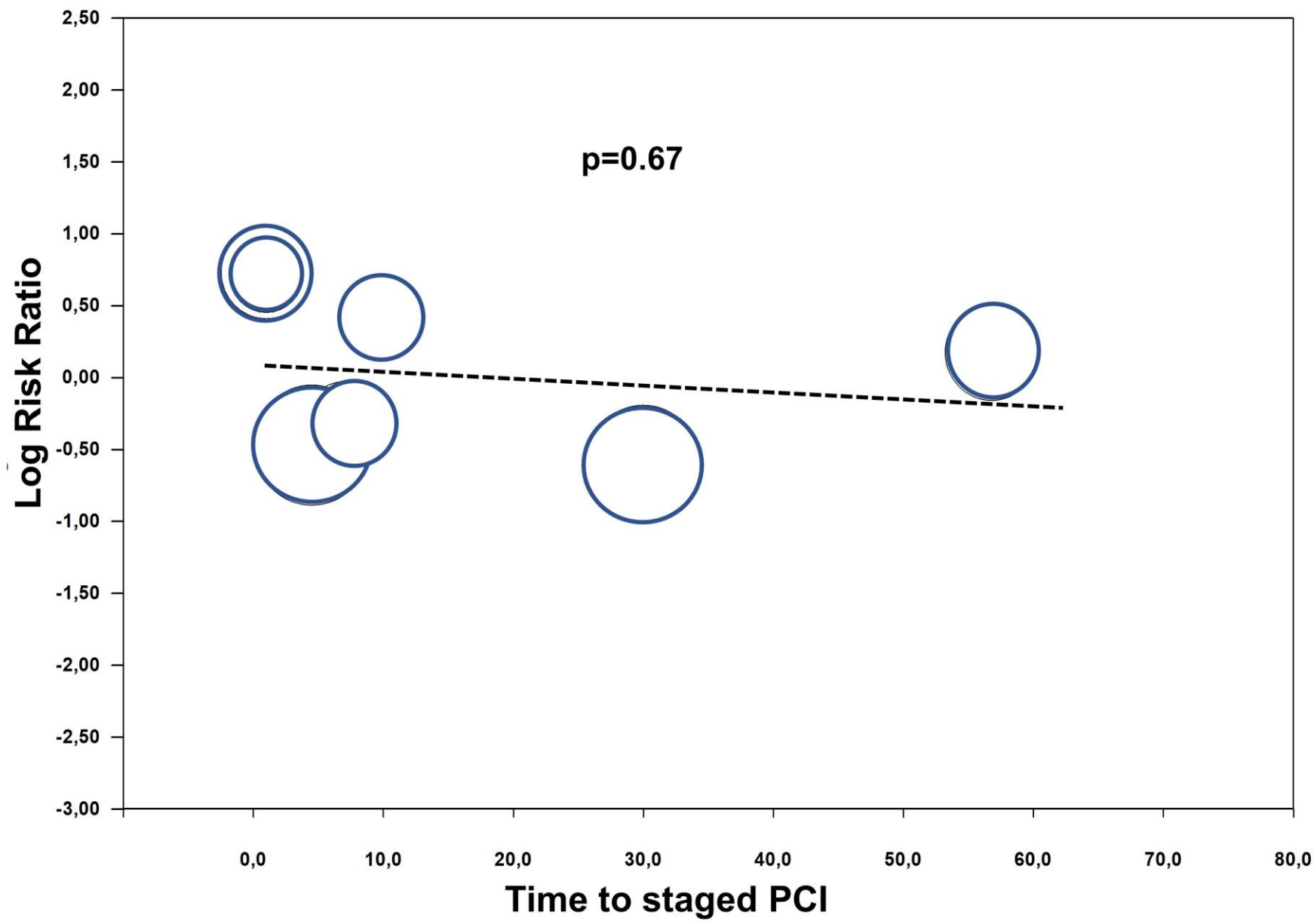
Supplementary Figure 9: cumulative meta-analysis for the primary composite outcome.



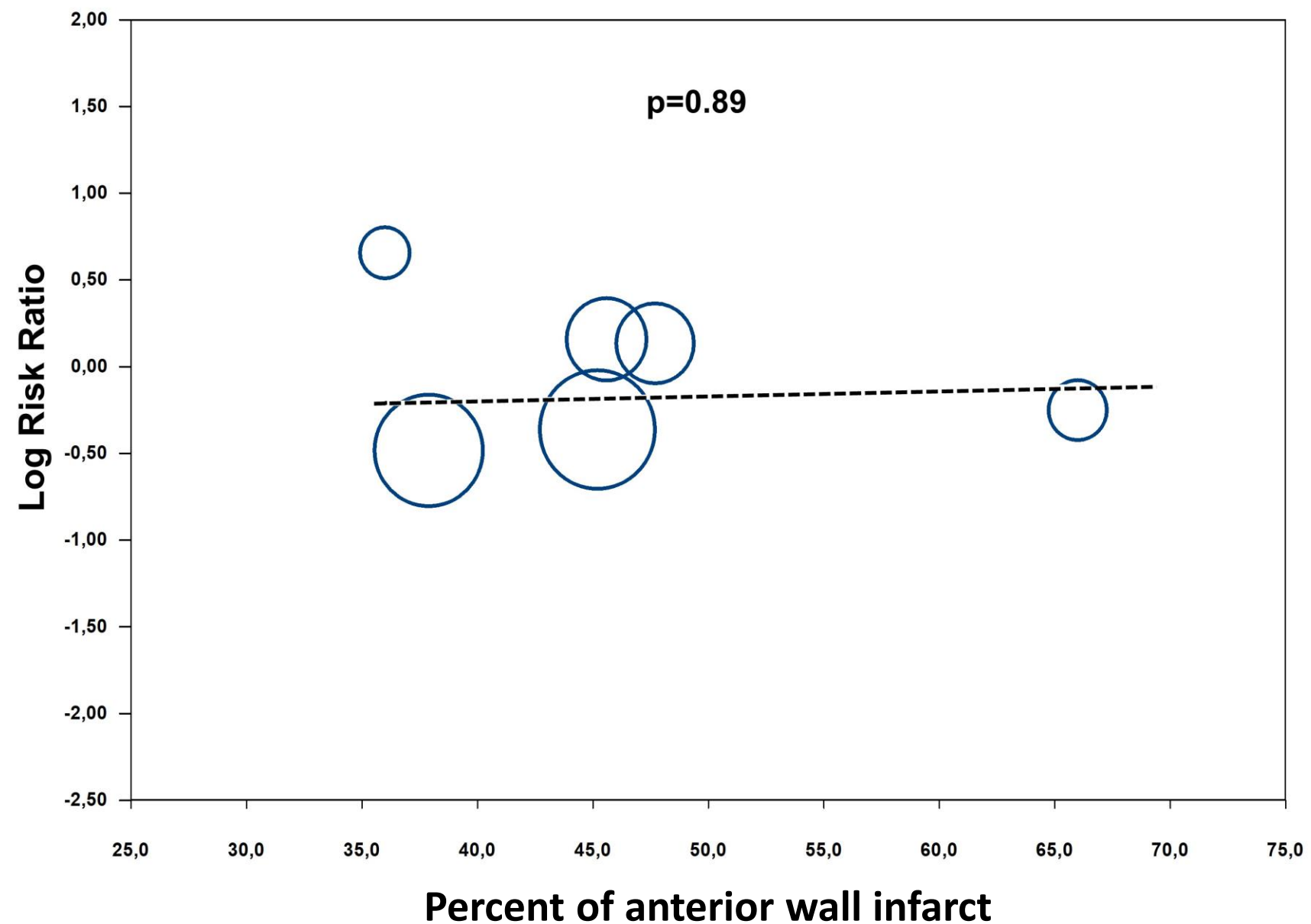
Supplementary Figure 10: cumulative meta-analysis for CV death, MI and repeat revascularization.



Supplementary Figure 11: meta regression of the effect of time to staged PCI on the primary endpoint.



Supplementary Figure 12: meta regression of the primary endpoint using infarct location on the anterior wall as the moderator.



Supplementary Figure 13: sensitivity analysis of the primary endpoint excluding the study with the longest follow-up (3 years).

